

WLS15



Low Profile LED Strip Light

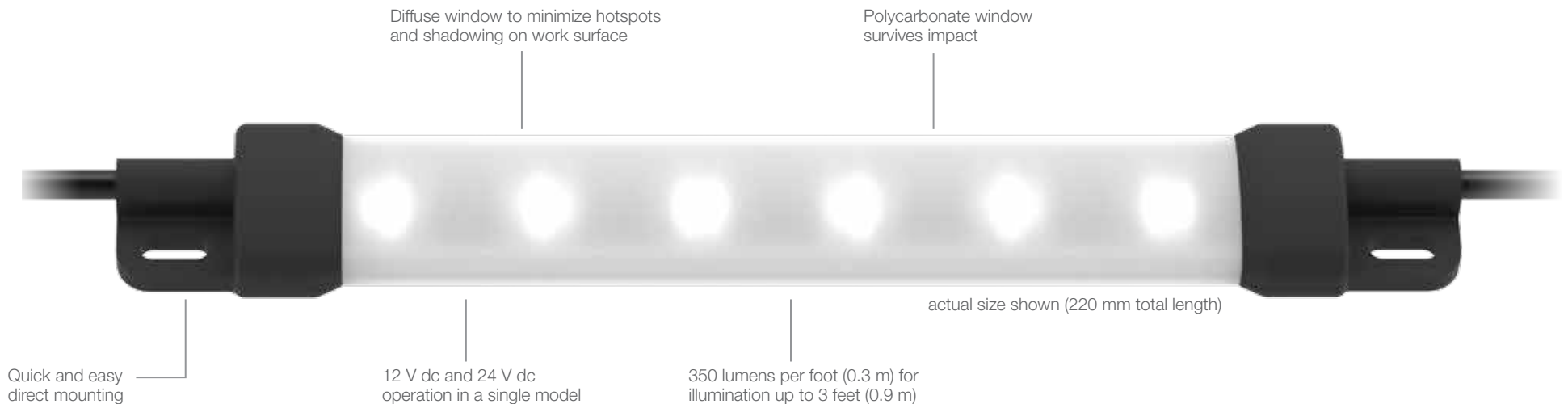
- Improves visibility, safety, and efficiency
- 15 mm low profile fits in tight spaces that other lights cannot
- Installs in minutes without impacting existing application framework
- Professional quality and certified product





Professional, Low-Profile LED Lighting—

- Improve worker performance by lighting under shelves, inside doors, above bins, and in cabinets
- Cascade models require only a single electrical installation
- Setup is quick and easy with simple mounting options, reducing time spent on installation
- Doubles as a detachable concentrated light source for troubleshooting assistance



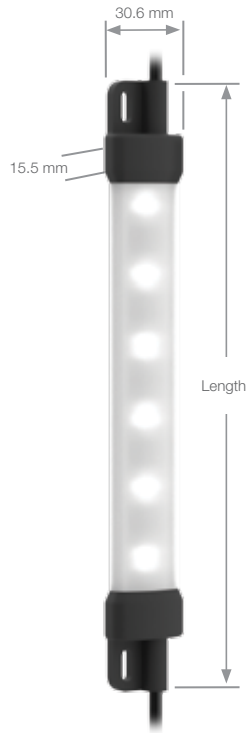
—Where You Need It

- IP67-rated sealed housing provides resistance to wet or dusty environments
- Rugged and industrial construction prevents breakage and potential product contamination
- 50,000 hour L70 LEDs ensure long life and minimize maintenance
- Standard connector and cable options for easy wiring



WLS15

Example Model Number: WLS15XDW0360DSC2

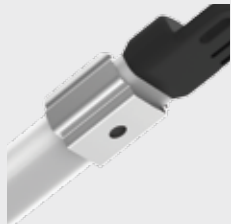


Family	Cascadable	Color	Length (mm)	Window	Construction	Connector
WLS15	X	DW	0360	D	S	C2
	C = Cascadable X = Non Cascadable	DW = Daylight White WW = Warm White	0220 0360 0500 0640 0920 1200	D = Diffused	S = Sealed (IP66, IP67)	C2 = 2 m Integral QP = 150 mm Integral Euro QD QS = 150 mm Integral cable with Deutsch DTM

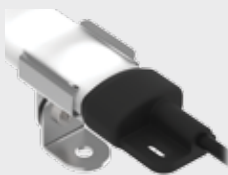
Length (mm)	Typical Current (A) at 25 °C		Maximum Current (A) at -40 °C		Lumens	
	12 V dc	24 V dc	12 V dc	24 V dc	Daylight White	Warm White
0220	0.19	0.10	0.24	0.12	175	170
0360	0.38	0.20	0.48	0.24	350	340
0500	0.57	0.30	0.72	0.36	525	510
0640	0.76	0.40	0.96	0.48	700	680
0920	1.14	0.60	1.44	0.72	1050	1020
1200	1.52	0.80	1.92	0.96	1400	1360

Power	12 V dc or 24 V dc nominal Absolute operational limits of 10 V dc to 15 V dc and 20 V dc to 27 V dc
Operating Conditions	Temperature: -40 to +60 °C Storage Temperature: -40 to +70 °C
Construction	Housing: Polycarbonate Endcaps: Polyamide
Environmental Rating	Rated IEC IP66 and IEC IP67 Suitable for wet locations per UL 2108
Certifications	

Accessories



LMBWLS15



LMBWLS15-150S



LMBWLS15MAG

Euro-Style
Straight connector models listed;
for right-angle, add **RA** to the
end of the model number
(example, **MQDC-406RA**)



4-Pin
MQDC-406
2 m (6.5')
MQDC-415
5 m (15')
MQDC-430
9 m (30')

Deutsch
Single-ended cordset with
straight connectors

2-Pin
DTMC-206
2 m (6')
DTMC-215
5 m (15')
DTMC-230
9 m (30')

Euro-Style QD
Double-ended



4-Pin
Straight/Straight
MQDEC-403SS
0.91 m (3')
MQDEC-412SS
3 m (12')
MQDEC-430SS
9 m (30')

Deutsch
Double-ended
cordset with
straight
connectors

2-Pin
Straight/Straight
DTMEC-2005
0.16 m (0.5')
DTMEC-206
2 m (6')
DTMEC-230
9 m (30')

4-Pin
Straight/Right-Angle
MQDEC-403RS
0.91 m (3')
MQDEC-412RS
3 m (12')
MQDEC-430RS
9 m (30')

Additional cordset
lengths available on
bannerengineering.com